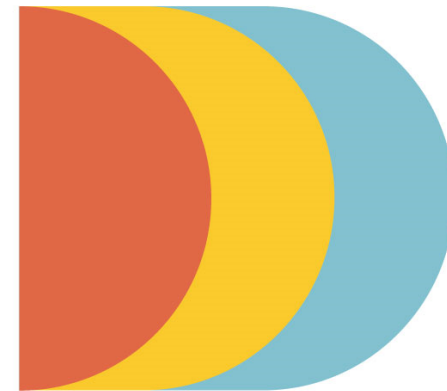




Ontario Active School Travel FUND



Q&A Webinar - 28 October 2020 - 1pm EST

Welcome!



Kate Berry

Program Director



Celenna Ciuro

Project Coordinator



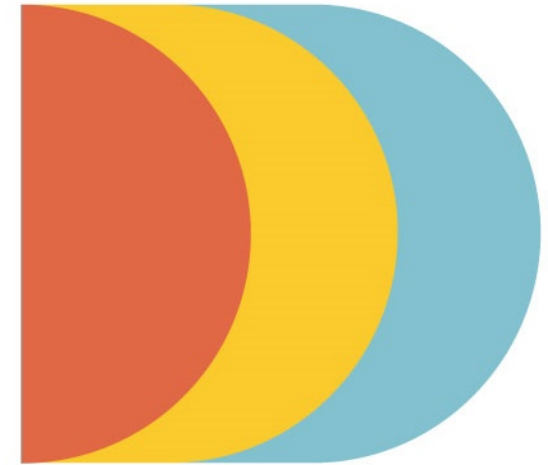
Green Communities Canada (GCC)

- Founded in 1995, **Green Communities Canada (GCC)** is a national association of 18 community organizations that share a vision of a green future for all. GCC and its member organizations work together from the ground up for transformative change.
- **Active School Travel (AST)** has been one of GCC's key areas of work and expertise since 1996 when the 'Active & Safe Routes to School' program was first established.
 - research, advocacy, education resources, training, and programming to encourage **more students to walk and cycle** for the school journey





Ontario Active School Travel



info@ontarioactiveschooltravel.ca

Ontario Active School Travel is funded by the Government of Ontario



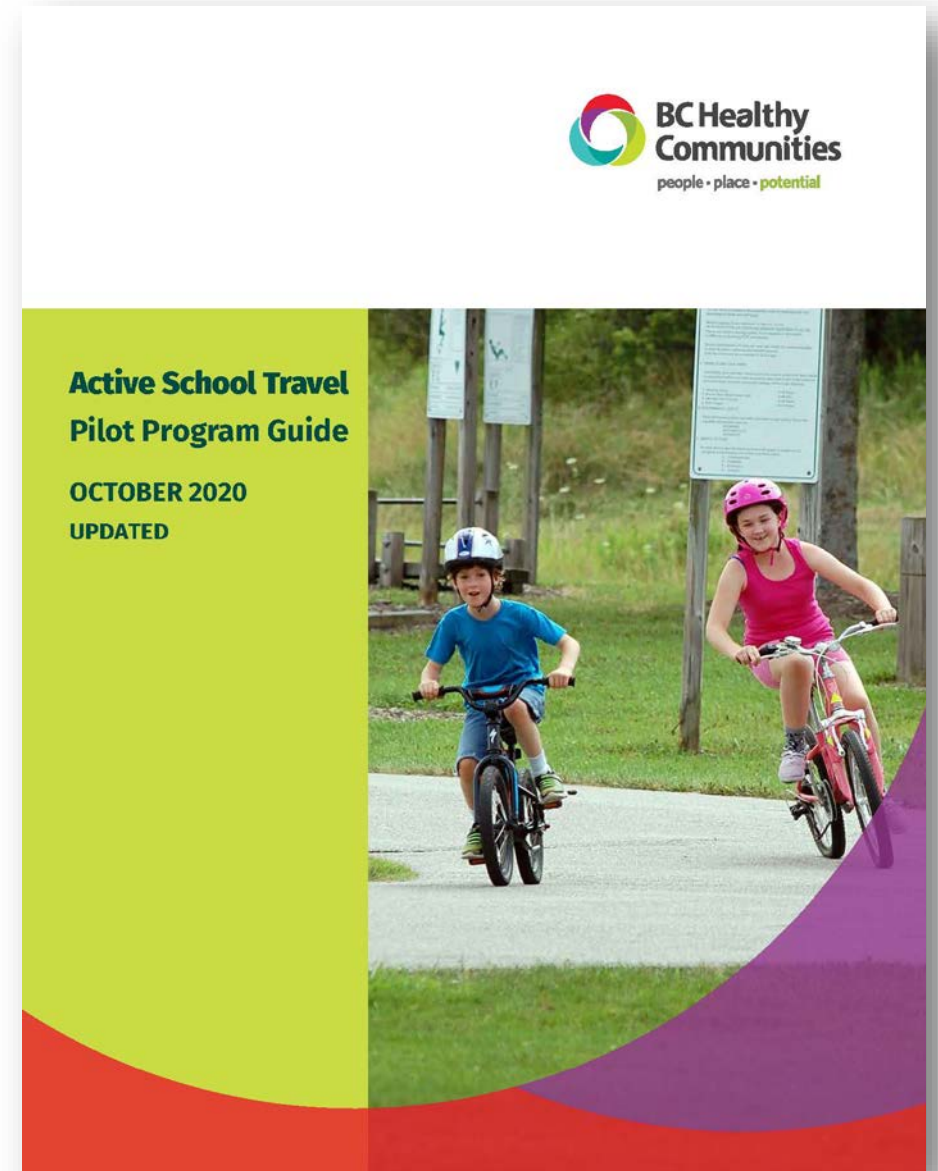
The OAST Objective

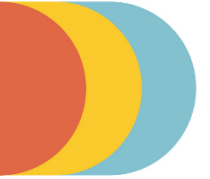
- Increase **active school travel opportunities** for elementary students in Ontario to:
 - **Prepare students for learning:** Active school travel supports mental health and wellness, which are critical to student success, by offering increased opportunities to engage in physical activity. Research has demonstrated a positive correlation between physical activity and improved academic outcomes.
 - **Improve safety:** Active school travel helps to decrease traffic in school zones, thereby improving safety for all students, regardless of travel mode.

~Ministry of Education, Transfer Payment Agreement with GCC - August 2020

Inspired by OAST....

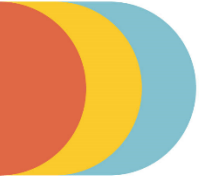
- British Columbia Ministry of Transportation and Infrastructure now piloting a provincial program for active school travel
- **BC Healthy Communities** appointed to develop a funding program for schools in British Columbia
- Adapting and borrowing from OAST materials and experience
- Launches October 2020





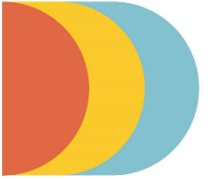
Agenda

- Fund overview
- Eligibility – *who can apply?*
- Criteria – *what makes for a strong application?*
- Priority areas – *what types of initiatives are important?*
- How to apply – *application process, type of information required*
- Questions and answers
 - If you have a question please use the webinar chat box and send to ‘everyone’



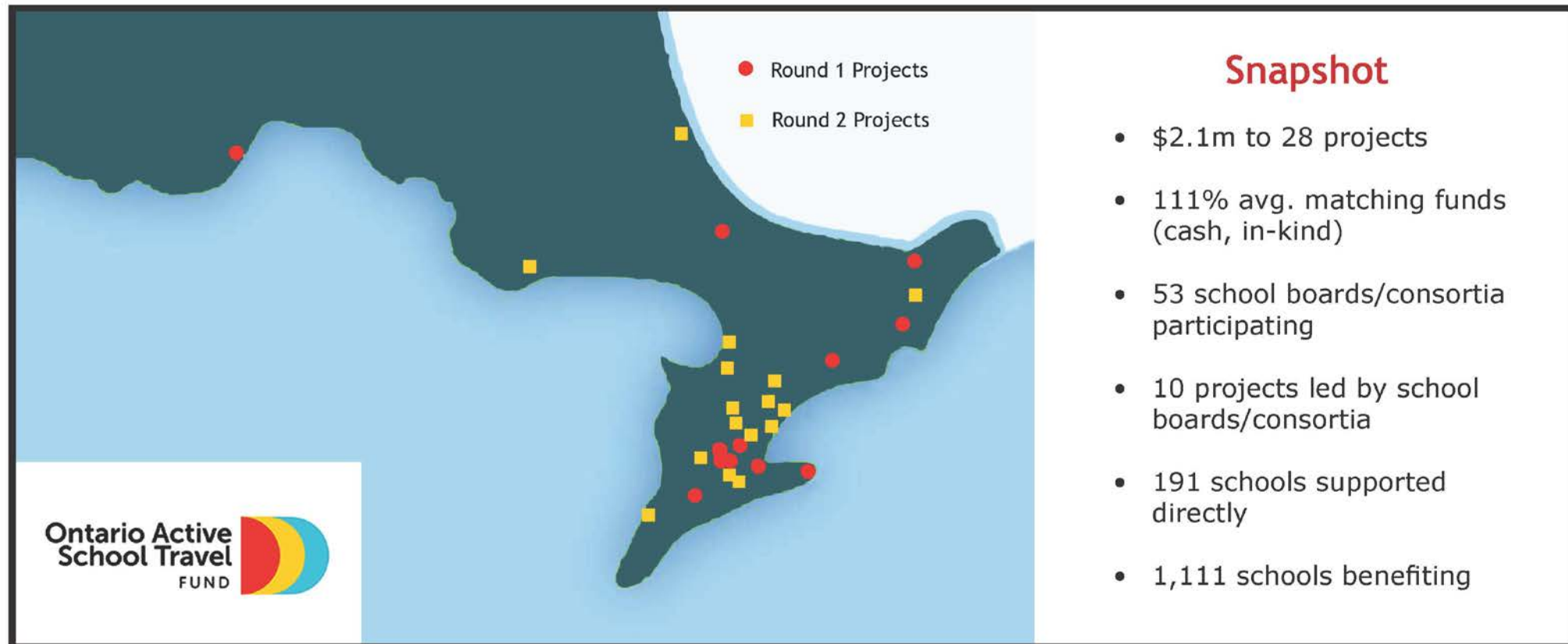
Fund overview

- Application-based funding (\$20k-\$60k per grant) available to support local active school travel programming
- Focus on elementary age groups (grades K–8)
- Funding available for initiatives that will have a **significant and lasting impact** in their communities
 - Expand and strengthen existing initiatives
 - Stimulate initiatives in new communities



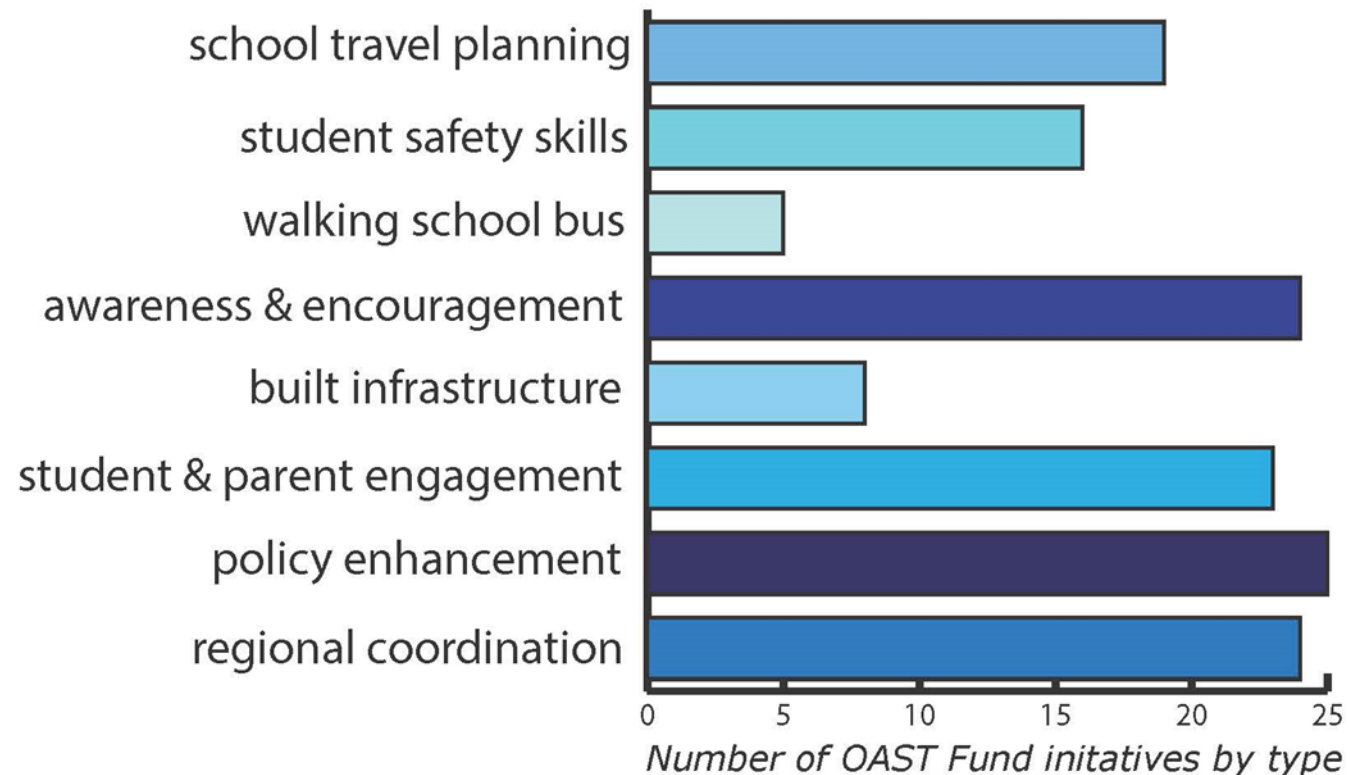
Fund overview

- 2018-2020: 28 projects in 52 communities across the province



Fund overview

- OAST Fund projects have implemented over 140 initiatives:



See '**Project Sheets**'
on Fund webpage for
more information
about previously
Funded initiatives

Project sheets

ontarioactiveschooltravel.ca/ontario-active-school-travel-fund/



ABOUT ▾

MAKING THE CASE ▾

MAKING IT HAPPEN ▾

GET HELP

NEWS

DONATE



FRANÇAIS

About the OAST Fund

The objective of the Fund is to increase active school travel opportunities for elementary students in Ontario to:

- **Prepare students for learning:** Active school travel supports mental health and wellness, which are critical to student success, by offering increased opportunities to engage in physical activity. Research has demonstrated a positive correlation between physical activity and improved academic outcomes.
- **Improve safety:** Active school travel helps to decrease traffic in school zones, thereby improving safety for all students, regardless of travel mode.

Between 2018-2020 Green Communities Canada awarded \$2.1m from the OAST Fund to support 28 projects that delivered AST initiatives in 52 communities across the province.

Click on the links below to find out more.

- [Ajax](#)
- [Barrie & Simcoe-Muskoka \(2 projects\)](#)
- [Blind River](#)
- [Brantford & Brant County \(2 projects\)](#)
- [Durham Region](#)
- [Hamilton](#)
- [Leeds, Grenville & Lanark](#)
- [London](#)
- [Markham](#)
- [Niagara](#)
- [North Bay](#)
- [North Grenville](#)
- [Ottawa](#)
- [Peel Region \(3 projects\)](#)
- [Peterborough](#)
- [Sarnia](#)
- [Stratford](#)
- [Thunder Bay](#)
- [Timiskaming](#)
- [Toronto](#)
- [Waterloo Region \(3 projects\)](#)
- [Wellington-Dufferin-Guelph](#)

Timeline for Round 3

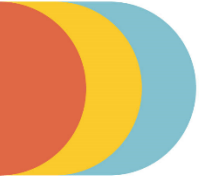
	2020	2021				2022	
	Q4	Q1	Q2	Q3	Q4	Q1	Q2
Application deadline: 20 Nov 2020							
Notification of decisions: 11 Dec 2020							
Award of funds: Jan 2021							
Implementation: Jan 2021 – June 2022							
Final report: March 2022							

Grant period of 18 months (ending 30 June 2022):

- start as soon as possible after award of funds January 2021
- complete the selection of schools by the end of January 2021
- must be actively implementing by 1 February 2021

Eligibility – *scale of project*

- Initiatives must take place in Ontario
- Initiatives operating at a **community scale** or **regional scale**, and supported by partnerships between key regional stakeholders (**municipality** and **school board** at a minimum)
 - Individual schools are not eligible to apply
- **Limit of one application per community.** By community we mean a lower tier or single tier municipal area.



Eligibility – *who can apply?*

- Lead applicant must be one of the following:
 - public health
 - municipality (lower, single or upper tier)
 - school board
 - student transportation consortium
 - non-profit corporation

Can previous recipients apply?

- Organizations that received OAST Funding before (Rounds 1 or 2) *can* apply to Round 3, but only if it is for a community that has not previously been funded. For example:

Leeds Grenville Lanark District Health Unit (LGLDHU) received Round 1 funding to implement a project in the three communities of Brockville, Mississippi Mills and Smiths Falls.

LGLDHU later secured Round 2 funding to implement a project in the community of North Grenville.

LGLDHU could apply to Round 3, provided that the proposed project is not located in any of the four communities that were supported in the previous rounds.

Criteria – *what makes for a strong application?*

- Relevance and lasting impact of the proposed initiative:
 - Will the initiative fill a need/gap within the community?
 - Will target audiences be engaged effectively?
 - Are plans in place to foster long-term shifts from passive to active school travel beyond 2022?
- Capacity of lead applicant and project team
 - Does the applicant and project team have the knowledge, skills and experience to deliver the initiative?

Achieving lasting impact

Building community capacity that will foster long-term commitments to increase active school travel requires a comprehensive approach that:

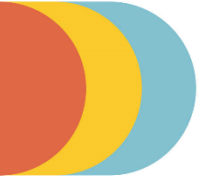
Involves multiple stakeholders

- Municipality
- Public Health
- School Board
- Student transportation consortia
- School staff, students and parents
- Police services



Addresses all of the 'Five E's'

- Education
- Encouragement
- Engineering
- Enforcement
- Evaluation



Priority areas

The Fund supports initiatives that achieve a comprehensive approach through a combination of:

1. School Travel Planning
2. Strengthening stakeholder partnerships, collaboration and coordination
3. Developing policy and procedures
4. Building public and political support

Priority area 1: School Travel Planning

Activities may include:

- appointing dedicated Facilitator(s) to implement School Travel Planning
- developing School Travel Plans
- implementing the actions identified in School Travel Plans

For more information about School Travel Planning:

<http://ontarioactiveschooltravel.ca/school-travel-planning/>

Priority area 2: Strengthening stakeholder partnerships, collaboration and coordination to leverage resources and support long term sustainability

Activities may include:

- building and strengthening partnerships
- enhancing collaboration and information-sharing
- creating or strengthening a committee that coordinates active school travel initiatives
- securing stakeholder commitment e.g. signing of an Active School Travel Charter
- building links between schools and community-wide initiatives to maximize access to the active transportation programs and resources available.
- creating opportunities for staff and volunteers to increase skill levels and leadership in active transportation

Priority area 3:

Developing policy and procedures

Activities may include:

- **conducting an environmental policy scan for your region/area**
- determine if and how existing policies and procedures are being implemented
- developing or updating policy and procedures, e.g. winter maintenance, student transportation, school siting and design, land use and transportation master planning



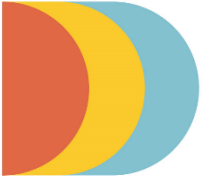
Priority area 4:

Building public and political support

Activities may include:

- **raising awareness through events, campaigns and media**
- sharing news and information, celebrating success
- engaging and involving local champions and leaders



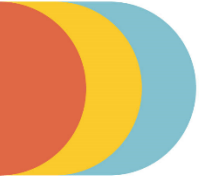


Learning supports

- The School Travel Planning Toolkit

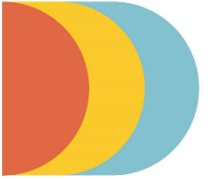
<http://ontarioactiveschooltravel.ca/school-travel-planning/school-travel-planning-toolkit/>

- Training, coaching and mentoring services
- Advice and guidance
- Grant recipient gatherings (online and in-person)
- OAST Network – online community of practice



Navigating COVID-19

- Atmosphere of uncertainty and elevated stress
- Variable student enrollment (Remote/in-class learning)
- Restrictions on in-school activities
- Reluctance for schools to take on new projects/additional activities
- Limited capacity amongst key stakeholders:
 - Schools, School Boards, Public Health

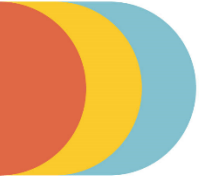


“Walking and cycling (while maintaining physical distancing) are considered safe and healthy activities by public health authorities and should be intentionally promoted as the preferred option for all students not travelling by school bus or public transit

School boards and transportation consortia should engage with their municipal and police partners to assess the anticipated traffic impacts and identify traffic safety measures for school zones.”

OAST Council Guidelines for Safe Healthy School Travel during COVID-19

Available in English & French at www.ontarioactiveschooltravel.ca/council



Navigating COVID-19

Design your project to be resilient and adaptable:

1. Be informed - talk to your school boards and other partners
2. Spread the load – share responsibility for the project
3. Expect change - build flexibility into timeline of activities
4. Go digital - use online tools for meetings and data collection
5. Take a ‘community-based’ approach – avoid channeling all activities and communications through individual schools

How to apply

- Register to access the Application Form and submission portal:

<http://ontarioactiveschooltravel.ca/ontario-active-school-travel-fund/>

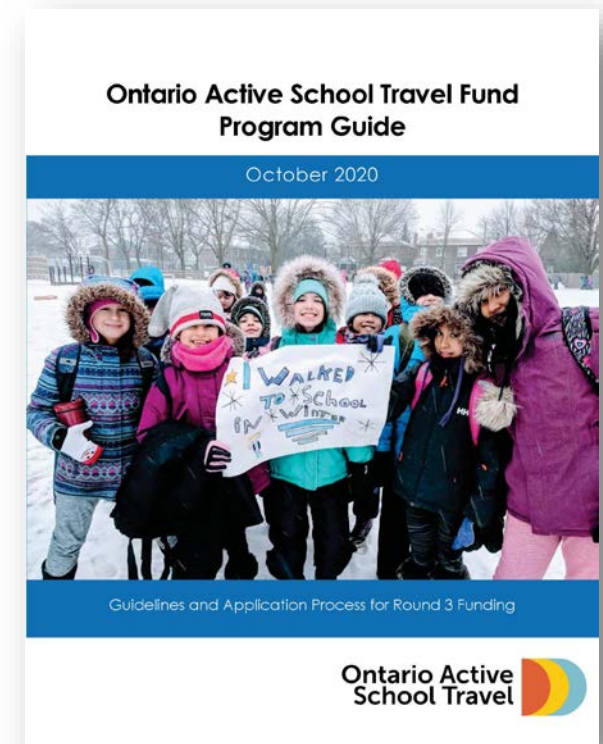
- Prepare application:

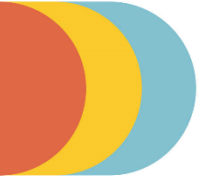
- Read the **Program Guide**
- Develop a proposal with community partners
- Complete the **Application Form**

- Submit application using the online portal:

- Application Form (Word and PDF versions)
- Budget, Project and Evaluation Plans (Excel)

Application Deadline: 20 November 2020



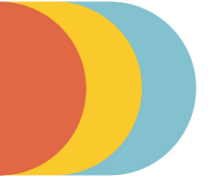


2: Project overview

- Description of proposed initiative
 - *Is the initiative well-defined and clear?*
- Location (catchment area) and School Boards involved

2: Project overview (con't)

- Description of how the proposed initiative will:
 - address the Priority Areas
 - *Are priority areas adequately and effectively addressed? Are there links between priority areas?*
 - differ from current work
 - *Is the initiative innovative? Will it fill a gap within the community?*
 - engage target audiences
 - *Will target audiences be engaged effectively?*
 - contribute to the goal of increasing the number of students that use active school travel
 - *Are the anticipated contributions realistic? Linked to specific actions?*



3: Building the case

- Rationale for the proposed initiative and relevance to the community
 - *Does the evidence cited support the rationale?*
 - *How does the initiative link with existing programs?*
- Track record and capability of the Lead Applicant (organization)
 - *Has the applicant organization made effective contributions to active school travel?*
 - *Does the applicant organization have the necessary leadership and expertise to deliver a partnership-based project?*

4: Partnerships and community capacity

- Description of the Project Team responsible for delivery
 - *Does the team have the knowledge, skills and experience to deliver the initiative?*
- Community stakeholders:
 - any existing active school travel steering committee
 - any existing official documents that outline roles and responsibilities, and demonstrates commitment
- Informal partners
 - *How will informal partnering or collaboration that support the proposed initiative?*
- Supporting partners: Municipality and School Board



5: Project budget

- Revenues

- Total amount of funds requested
- Matching funds (cash and in-kind)
 - source, type and amount
 - min **50%** of the total grant requested

- Expenses

- Direct personnel costs
- Direct non-personnel costs
- Honoraria, incentives and prizes (max. **5%** of grant requested)
- Administration costs (max. **15%** of grant requested)
- Other expenses

Matching funds

- Matching funds (cash and in-kind) may include:
 - grants or cash contributions from:
 - municipal, regional or provincial government
 - school board
 - in-kind contribution of:
 - staff time (e.g. municipal, public health)
 - space, equipment and supplies (e.g. meeting space, printed materials)
 - professional services (e.g. graphic design, legal advice, event speaker)
 - volunteer hours (e.g. school council, parents, students)
- Capital works cannot be counted towards matching funds
- All matching funds must come from sources that were not already committed prior to the proposed initiative

5: Project plan

Project Plan Template				
Project Phase	Key Objectives (e.g., support School Travel Planning, increase physical activity opportunities, engage and raise awareness, build sustainable capacity, strengthen partnerships, build public or political support)	Tasks and Deliverables	Resources Required (i.e., personnel/role, facilities and materials required)	Estimated Date of Completion
Planning and Set-up				
Delivery				
Final Evaluation				

- There are key activities that must be included – see the [Program Guide](#)

6: Evaluation plan

- Description of how results and lessons learned will be shared
- Evaluation Plan:

Process

Whether the initiative was delivered as planned, how well it functioned, challenges faced, solutions employed.

Outcome

The types of changes resulting from the initiative, the impact and relevance, unintended outcomes, key contributions.

Evaluation Plan Template					
Project Phase	Key Objectives (e.g., support School Travel Planning, increase physical activity opportunities, engage and raise awareness, build sustainable capacity, strengthen partnerships, build public or political support)	Tasks and Deliverables	Goals/Target Results	Performance Measures (metrics) (e.g., #surveys completed, #media hits, #newsletters) Process or Outcome measure?	Potential Data Collection Tools (e.g., School Selection tool, Student Travel Survey, School Profile Form, Google Analytics)
Planning and Set-up					

7: Sustainability plan

Description of how active school travel will be supported and sustained once the grant ends in 2020.

- *Is there a plan to foster long-term shifts from passive to active school travel?*
- *Are sustainability plans realistic and well-defined?*
- *Are alternate, long-term sources of funding identified?*

Information and inspiration

- Read the **Program Guide**
- Review the **FAQs** (will be updated following this webinar)
- Utilise these additional reference materials:
 - Project Sheets + Matrix Directory
 - OAST Council Guidelines for Safe Healthy School Travel
 - WOW T'Bay Project Video
 - 'About the Fund' Brochure Sheet
 - Summary of Factors for Success

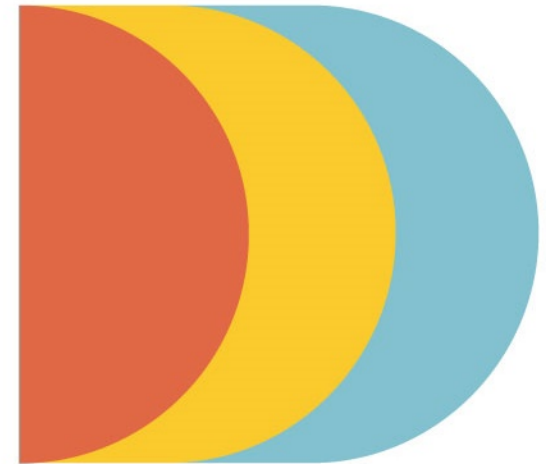
<http://ontarioactiveschooltravel.ca/ontario-active-school-travel-fund/>

A recording of this webinar will also be posted on the webpage

Questions?

Thank you!

Ontario Active School Travel



Ontario Active School Travel is funded by the Government of Ontario

